

Installation of Compact Flash Readers

This document describes the steps for installation a Compact Flash Reader under Windows.

Hardware Requirements:

In order to install a Compact Flash Reader, Compact Flash Slot Type II is required. Optionally, a PCMCIA slot can be used. In this case, a additional adapter from PCMCIA to Compact Flash Type II is needed (shown below). Please note that it is not possible to use a memory card reader for USB, because the device acts as a I/O device.



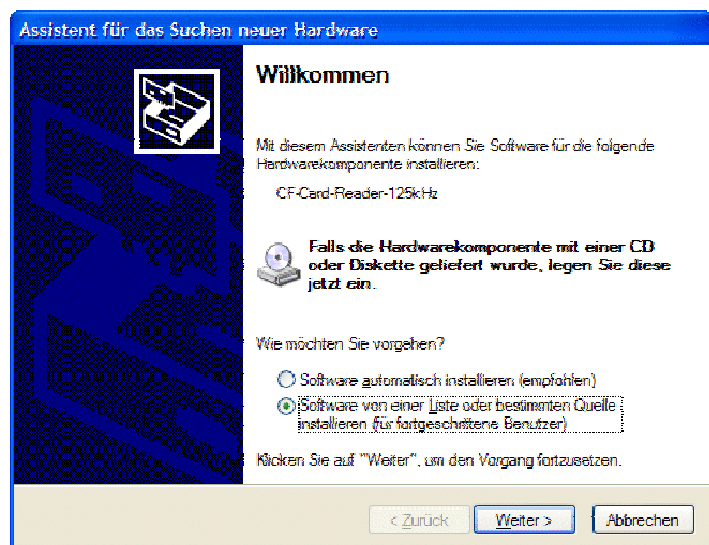
Installation under Windows CE or Pocket PC

For installation under Windows CE and Pocket PC, the necessary drivers are part of the operating system. Therefore the reader can simply be plugged into the device. The reader will be recognized automatically by the operating system.

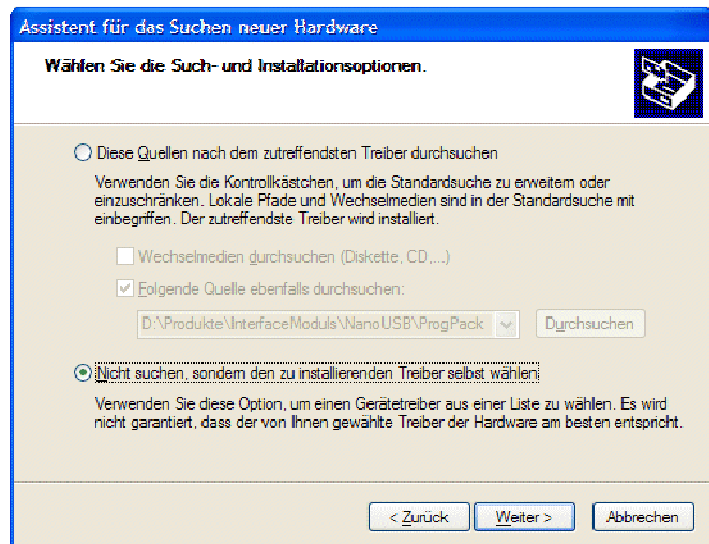
Installation under Windows XP

For installation under Windows XP, the necessary drivers are part of the operating system. In order to install the reader, some steps are required, which have to be done manually.

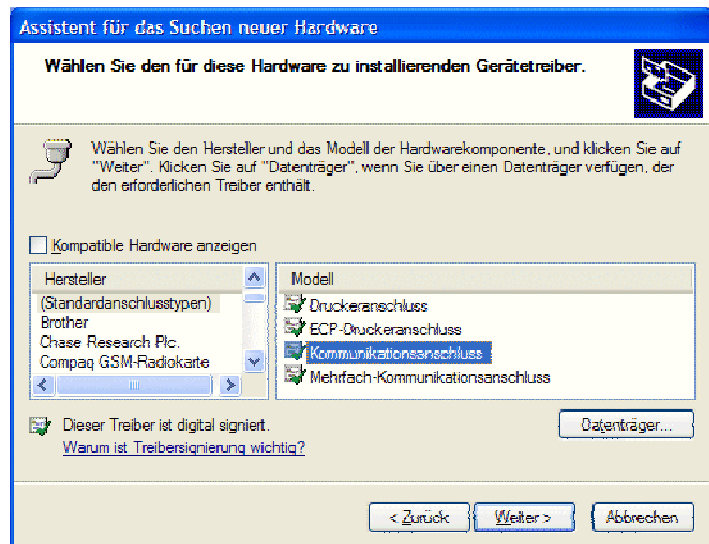
First, plug the reader into the CF slot. Depending on the language of your operating system a similar dialog should appear. Please choose to select the hardware from a list or source.



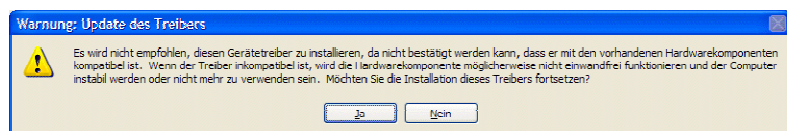
In the following dialog, please choose to select the driver by yourself.



Select a communication port as the type of hardware.



Accept the following dialog.



Now the CF card reader is installed. It can be accessed as a normal serial communication port.

