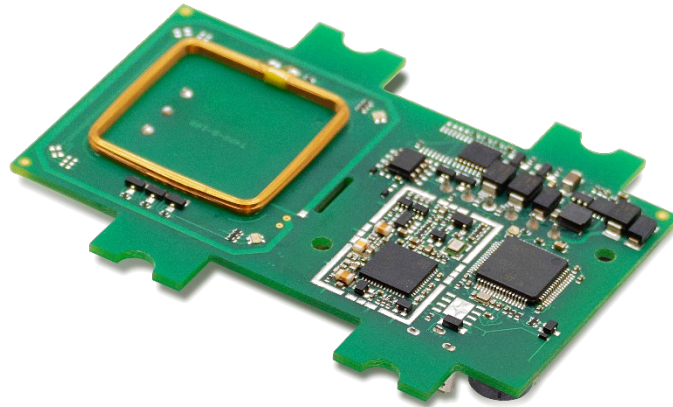


TWN4 Palon One LEGIC M LF HF

125 kHz / 13.56 MHz contactless RFID module with NFC support



TWN4 Palon One LEGIC M LF HF is designed as a versatile OEM module for integration into third-party products and devices. It supports enhanced interfaces. The new PCB board inherits all advantages and integrated tool support of the ELATEC TWN4 family.

TWN4 Palon One LEGIC M LF HF is a multi-technology reader/writer supporting almost all 125 kHz and 13.56 MHz contactless technologies, including NFC. On-board antennas for HF and LF allow excellent contactless performance.

Special features:

- + Optimized PCB design for OEM integration
- + On-board LF and HF antennas
- + One on-board SAM socket (Secure Access Module)
- + Interfaces: RS-485, Clock/Data, Wiegand, USB, OSDP protocol optionally
- + Supports quick (re)configuration over network and over wireless interface with TWN4 CONFIG Card
- + Supports transparent data exchange with RFID media
- + Firmware update in the field possible
- + Powerful SDK for writing apps which are executed directly on the reader
- + On-board 18 kB flash storage, e.g. for storing user accessible non-volatile data



Elevator



EV Chargers



Access



Shop POS



Fitness
Equipment



Ticket POS



PC Log-on



Document
Management



Driver ID



Vending



Parking



Gaming



Locker Locks



Time
Attendance



Industrial
PC

TECHNICAL DATA

FREQUENCIES	125 kHz (LF) / 13.56 MHz (HF)	
ANTENNAS	Integrated	
DIMENSIONS (L X W X H)	Approx. 83.00 x 62.00 x 14.00 mm / 3.27 x 2.44 x 0.55 inch	
POWER	Micro USB: 4.3 V - 5.5 V Connector X2: 9.0 V - 30 V ES1/PS2 classified power source according to IEC 62368-1, short-circuit current < 8 A	
CURRENT CONSUMPTION	Idle: 50 mA @12 V; operating: typically 130 mA @12 V	
TEMPERATURE RANGE	Operating: -25 °C up to +80 °C (-13 °F up to +176 °F) Storage: -40 °C up to +85 °C (-40 °F up to +185 °F)	
RELATIVE HUMIDITY	5% to 95% non-condensing	
READ- / WRITE DISTANCE	LF and HF: up to 100 mm / 4 inch, depending on OEM environment and transponder	
OPERATING MODES (USB)	USB keyboard emulation – USB virtual COM port – CCID / PC/SC 2.01	
MTBF	500,000 hours	
WEIGHT	Approx. 25 g / 0.88 oz	
COMPATIBLE PIN HEADER	Plug-in connection terminal block, 6 pins, screw fastening of wires	
SABOTAGE DETECTION	Micro Tamper Switch	
SIGNALING	2 RGB LEDs, individually programmable Buzzer	
SUPPORTED OPTIONS AND TRANSPONDERS	Depending on the firmware version and installed options, ELATEC readers and modules can support a wide range of RFID technologies. Please refer to the relevant ELATEC transponder matrix (available at www.elatec-rfid.com/int/transponder-technology) for more information about the available options and RFID technologies supported by the product.	
OS SUPPORT	Windows 7 (32-/64-bit) and higher versions, Linux, Android ¹⁾ , iOS ¹⁾ , MAC OS X ¹⁾	
PERIPHERAL INTERFACES	Micro USB, RS-485, OSDP ¹⁾ , RS-232 (RX/TX) ¹⁾ , Output 5V: Wiegand (D0/D1), or Clock/Data, 1 SAM slot for ID-000 card format	
TRANSMISSION SPEED	USB full speed (12 Mbit/s), RS-485: up to 38,400 baud	
CERTIFICATION NAME	TWN4 Palon One LEGIC M LF HF	
CERTIFICATIONS	Non-exhaustive list ²⁾ : CE/RED, REACH and RoHS-III compliant	
ORDER CODES	T4W1-B1B16	Standard reader module
	T4W1-B1B16-P	Reader module with P option

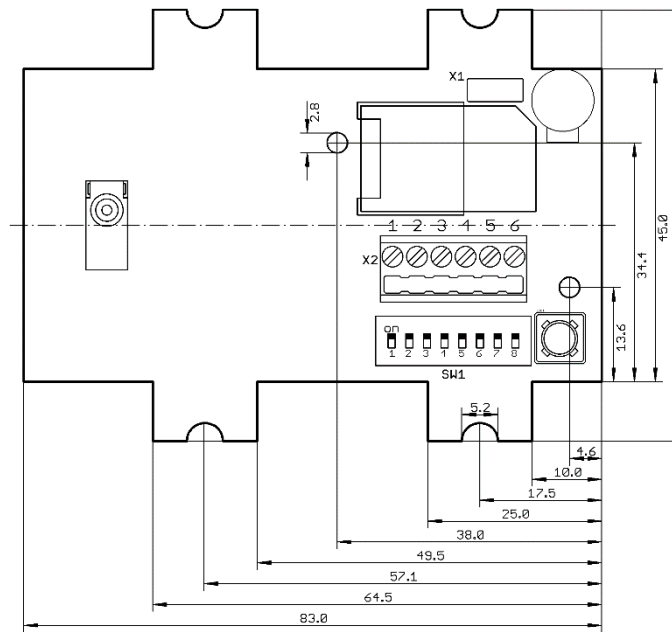
¹⁾On request

²⁾The product has been certified for use in many countries and regions. Contact your Sales representative for detailed information about all certifications and approvals granted to the product.

DRAWING / CONNECTOR ASSIGNMENT

PIN	ASSIGNMENT
1	RS-485 A
2	RS-485 B
3	Wiegand D0 or DATA
4	Wiegand D1 or CLOCK
5	GND
6	VIN 9 – 30 Volt

DIP	ASSIGNMENT
1	RS-485 address 0 LSB
2	RS-485 address 1
3	RS-485 address 2
4	RS-485 address 3
5	RS-485 BIAS on/off
6	RS-485 speed 0
7	RS-485 speed 1
8	RS-485 Termination 120 Ohm



Drawing
(All measures in mm)

Firmware may change the assignment of the DIP switch. Please refer to the TWN4 Palon manual.
For Wiegand, Clock/Data the DIP switches are not in use.

ELATEC GmbH
Zeppelinstr. 1
82178 Puchheim
Germany
P +49 89 552 9961 0
F +49 89 552 9961 129
E-Mail: info-rfid@elatec.com
Website: elatec.com

ELATEC Systems GmbH
Schwieberdinger Str. 44
71636 Ludwigsburg
Germany
P +49 7141 309736 0
E-Mail: info-rfid@elatec.com
Website: elatec.com

ELATEC Inc.
1995 SW Martin Hwy
Palm City • FL 34990
USA
P +1 772 210 2263
F +1 772 382 3749
E-Mail: americas-info@elatec.com
Website: elatec.com

ELATEC Technology (Shenzhen) LLC
918, Main Building, Tian An Cyber Times
Tower, No. 6, Tairan Fourth Road, Tian 'an
Community, Shatou Neighborhood
Futian District • Shenzhen • China
P/F +86 755 2394 6014
E-Mail: apac-info@elatec.com
Website: elatec.com

ELATEC reserves the right to change any information or data in this document without prior notice. ELATEC declines all responsibility for the use of this product with any other specification but the one mentioned above. Any additional requirement for a specific customer application has to be validated by the customer themselves at their own responsibility. Where application information is given, it is only advisory and does not form part of the specification. Disclaimer: All names used in this document are registered trademarks of their respective owners.